



2011



BORDER RANGES RALLY

Spectator Instructions

9th April

With support from the communities of
Urbenville and Woodenbong

DISCLAIMER

EXCLUSION OF LIABILITY, RELEASE AND ASSUMPTION OF RISK MOTOR SPORT IS DANGEROUS

In exchange for being able to attend or participate in the event, you agree:

- to release Confederation of Australian Motor Sport Ltd ("CAMS") and Australian Motor Sport Commission Ltd, promoters, sponsor organisations, land owners and lessees, organisers of the event, their respective servants, officials, representatives and agents (collectively, the "Associated Entities") from all liability for your death, personal injury (including burns), psychological trauma, loss or damage (including property damage) ("harm") howsoever arising from your participation in or attendance at the event, except to the extent prohibited by law;
- that CAMS and the Associated Entities do not make any warranty, implied or express, that the event services will be provided with due care and skill or that any materials provided in connection with the services will be fit for the purpose for which they are supplied; and
- to attend or participate in the event at your own risk.

You acknowledge that the risks associated with attending or participating in the event include the risk that you may suffer harm as a result of:

- motor vehicles (or parts of them) colliding with other motor vehicles, persons or property;
- acts of violence and other harmful acts (whether intentional or inadvertent) committed by persons attending or participating in the event; and
- the failure or unsuitability of facilities (including grand-stands, fences and guard rails) to ensure the safety of persons or property at the event.

Motor sport is dangerous and that accidents causing harm can and do happen and may happen to you.

You accept the conditions of, and acknowledge the risks arising from, attending or participating in the event and being provided with the event services by CAMS and the Associated Entities.

Message from the Deputy Clerk of the Course

Welcome to the 2011 Border Ranges Rally, continuing the tradition of Rallying on shire roads in the beautiful NSW valley of URBENVILLE and WOODENBONG. This year the Gold Coast Tweed Motorsporting Club Inc, is conducting the competition on Saturday 9th April, centered at the great facilities at the Woodenbong Showgrounds. We are also continuing our clubs tradition of supporting the local communities in their fund raising activities. Remember, without the support of the locals, rallying in this area would be impossible.

We are again aiming to finish the event early, to provide ample opportunity to socialise during the presentation at the Woodenbong Showgrounds following the event. Please remember that there are ample camping facilities at the Woodenbong Showground perimeter, and that hotel/motel accommodation is extremely limited. The traditional morning after breakfast with excellent catering by the local community will be available at the Woodenbong Showground, so we invite you to stay over night and enjoy the festivities.

Thanks also to the Brisbane Sporting Car Club for their assistance with the event.

Regards, Stephen Davies

GCTMC INC OCCUPATIONAL HEALTH AND SAFETY POLICY STATEMENT

The Gold Coast Tweed Motorsporting Club Inc. (GCTMC) is committed to providing a safe and healthy environment for all stakeholders. The GCTMC will strive to minimise risks to the health, safety and welfare of all competitors, voluntary workers, officials, contractors and visitors at the Border Ranges Rally (the event). The GCTMC, and event organising committee, supports and encourages a proactive approach in identifying, assessing and reducing risk at the event.

As part of its commitment, the GCTMC will comply with relevant Occupational Health and Safety legislation. We will ensure that due care is taken to protect the safety of stakeholders and the public. We will comply with relevant Occupational Health and Safety legislation and the safety policies and procedures of the Confederation of Australian Motorsport (CAMS). The GCTMC expects that all stakeholders and visitors to the event will also comply with these policies and procedures, and at all times protect the health, safety and welfare of themselves, their colleagues, event patrons and the community.

Stephen Davies, Clerk of the Course, Border Ranges Rally

SPECTATOR INSTRUCTIONS

Spectators are directed to view the cars whilst standing within the markers indicating the limits of the controlled spectator area – spectating outside those areas indicated is prohibited. Spectators must not stand in prohibited areas, and must at all times stand behind the bunting which marks the spectator area.

The instructions of the Spectator Marshals must be obeyed. The Spectator Marshall has the power to postpone a stage until the spectator point is controlled to their satisfaction. It is prohibited to ignore the spectator instructions and find your own way around. Not only is there a danger of meeting up with an oncoming rally vehicle, but many roads have wash-aways, collapsed bridges, etc. which are potentially hazardous. The main spectator route has been surveyed and is safe at time of writing.

Gold Coast Tweed Motorsporting Club Inc

The Gold Coast Tweed Motorsporting Club Inc has been servicing the Gold Coast and Tweed Shires for many years. Club meetings are held at Mudgeeraba Showgrounds Cnr Mudgeeraba Rd and Worongary Rd Mudgeeraba on the third Wednesday night of each month. The club is affiliated with the Confederation of Australian Motorsport (CAMS) and as such conducts its events under the strictest guidelines.



Members compete in many aspects of motorsport. The range of activities includes:

Gravel Rallies
Tarmac Rallies
Khanacross

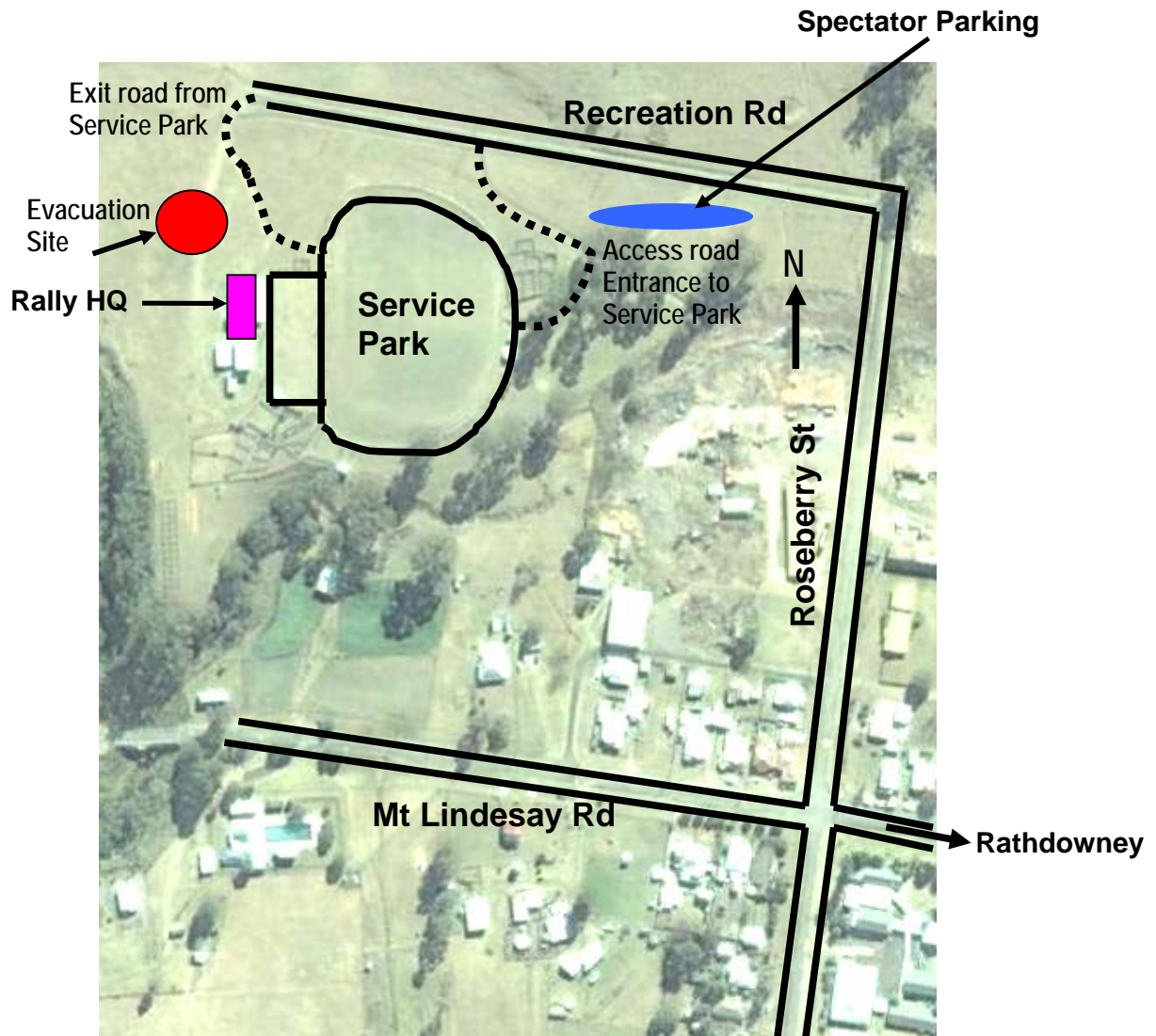
Circuit Racing
Motorkhanas
Sprints

Autocross
Hillclimbs
Touring Assemblies

For further information view the website: www.gctmc.org.au

Directions to Service Park @ Woodenbong Showgrounds from Rathdowney

Follow Mount Lindesay Highway from Beaudesert to Rathdowney (approximately 32km)
Follow Mount Lindesay Highway south from Rathdowney to Woodenbong (approximately 41km)
Travel time to Woodenbong from central Brisbane is approximately 2.30 hours
In Woodenbong turn right into Rosebury St past the sawmill then left into Recreation Rd
Follow access road to the Service Park.



Woodenbong Showgrounds			
Competition vehicles on display	from 11.00am	Start	12.30pm
Service and regroup various times throughout the day and night	Ongoing	Finish	8.30pm

Spectator Point 1 1st car due at 13.30 pm and 15.40 pm Special Stage 2 & 5 Stage: Beaury South

Spectator Point 1 – allow 30 minutes drive and 10 minutes walk to spectator point from Woodenbong

Turn right out of Woodenbong Showgrounds on Recreation Rd

Turn right into Rosebury St past the sawmill

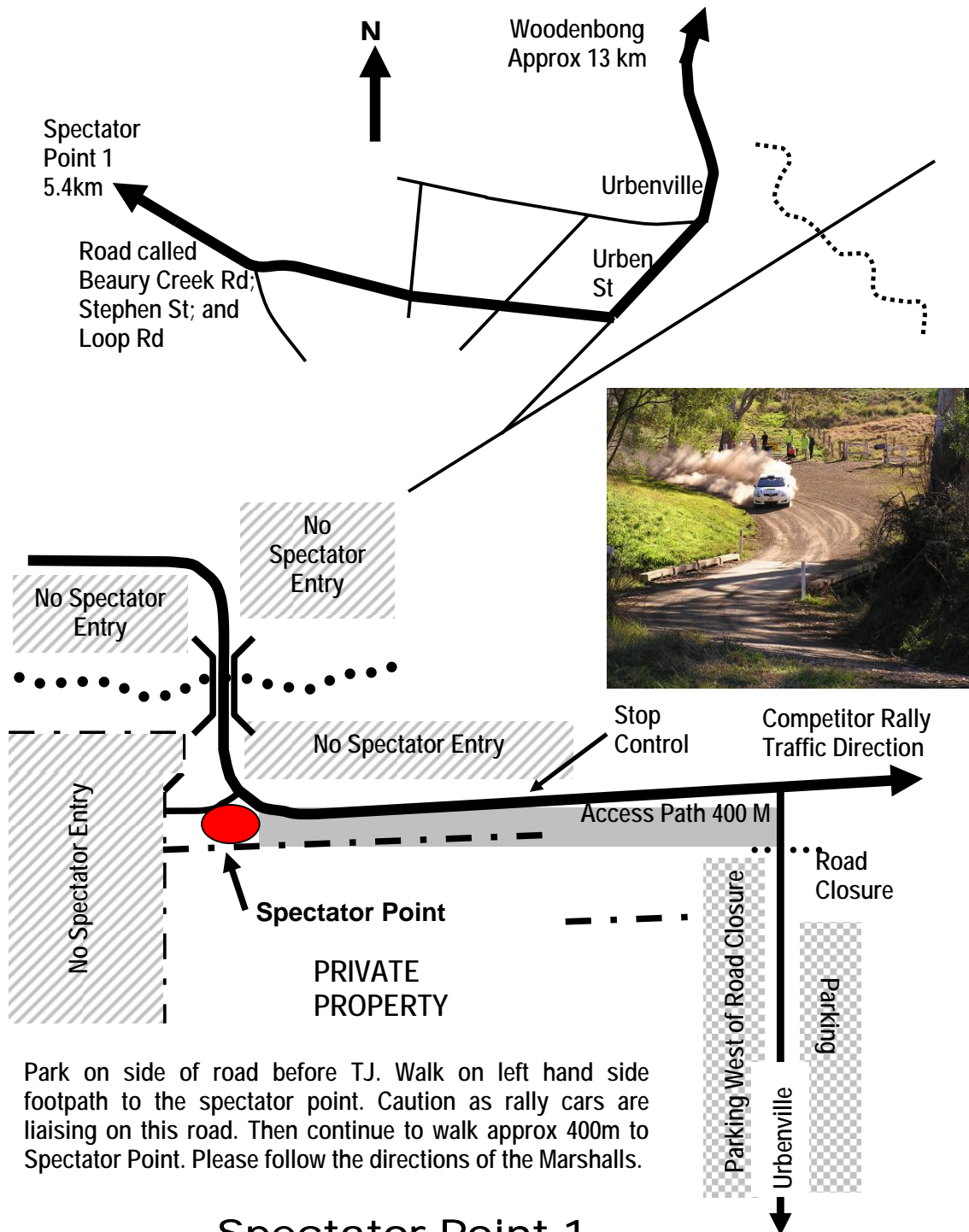
Turn left into Mount Lindesay Rd (Unumgar St)

Turn right at pub into Macpherson St. Note: This becomes Urban St which is the road to Urbenville approx 13km away.

In Urbenville township turn right into Beaury Creek Rd (also called Stephen St, Urbanville Rd and Loop Rd)

After 5.4 km park on either side of road (u turn at intersection) PLEASE LEAVE THE ROAD CLEAR FOR EMERGENCY VEHICLES

Walk to the spectator point as directed along left side of road for approx 400 meters, through gate into private property and follow the fence line to the tight (on inside) to the spectator point. DO NOT WALK ON THE ROAD as it is a competitive section.



Park on side of road before TJ. Walk on left hand side footpath to the spectator point. Caution as rally cars are liaising on this road. Then continue to walk approx 400m to Spectator Point. Please follow the directions of the Marshalls.

Spectator Point 1

Spectator Point 2 – allow 5 minutes drive and 5 minutes walk to spectator point

Turn right out of Woodenbong Showgrounds on Recreation Rd

Turn right into Rosebury St past the sawmill

Turn left into Mount Lindesay Rd (Unumgar St)

Turn right at pub into Macpherson St. Park (Do not park on median strip)

Walk to Glennie St to spectator point

Spectator Point 2 Woodenbong

