

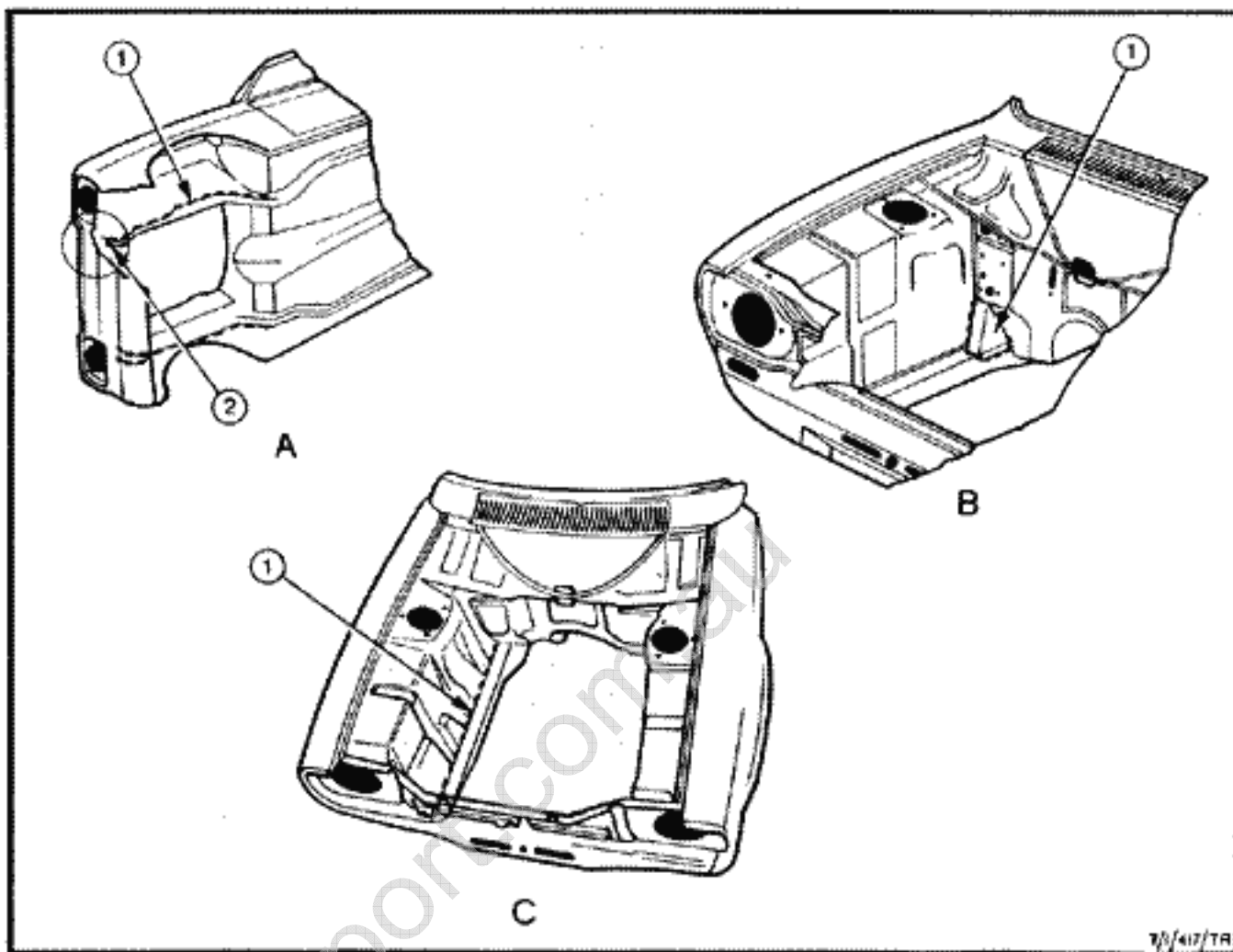
Diagram I

A1 Tack weld to flange edges of longitudinal stiffeners.

A2 Tack weld longitudinal stiffener flange to lower panel.

B1 Tack weld gusset plate to bodyshell.

C1 Tack weld along entire length of longitudinal stiffener top flange inside engine compartment to fender inner panel.



7/3/417/TR

Diagram II

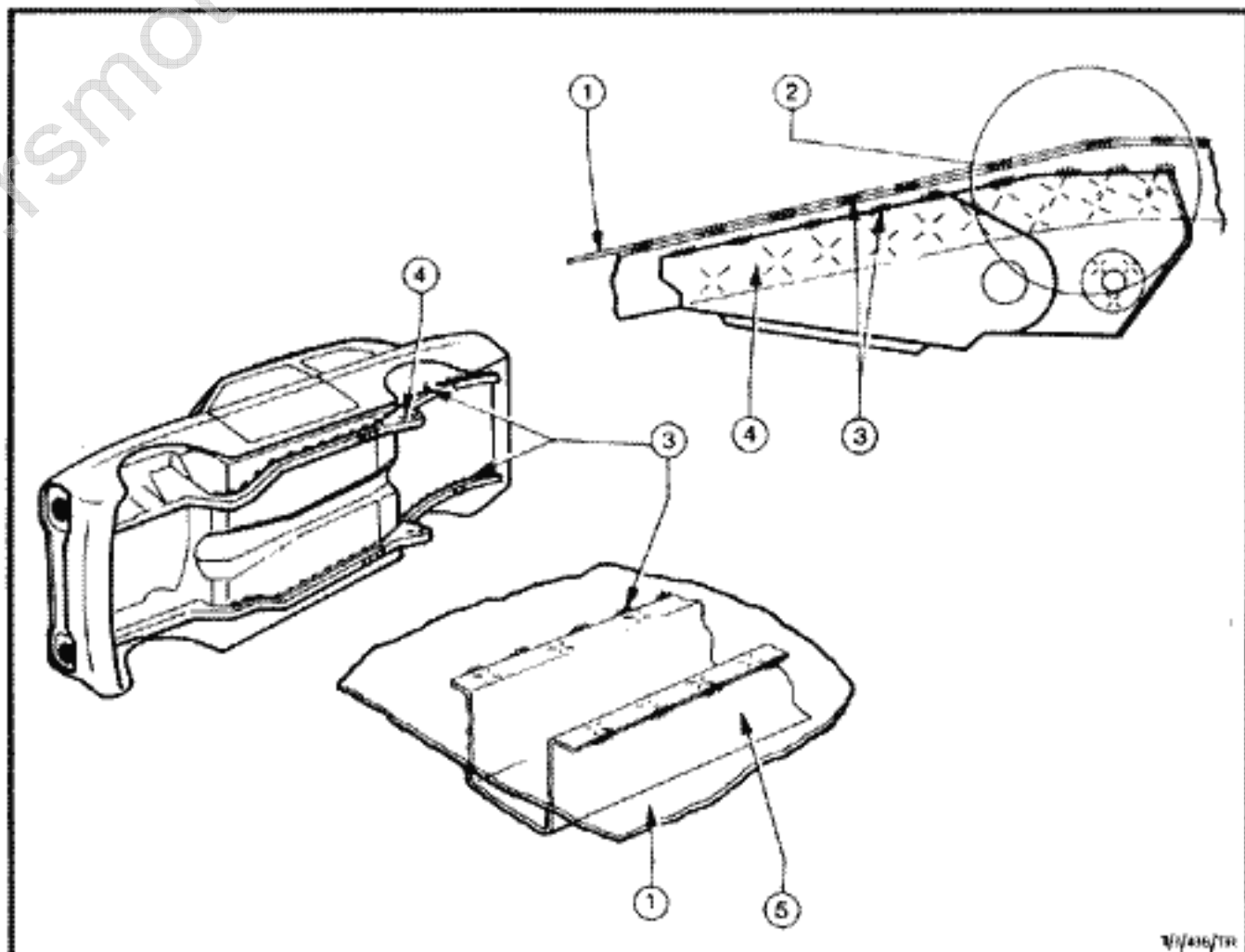
1 Floor pan.

2 Spring hanger bracket welds, in circle, on outboard side of stiffener only.

3 Tack weld both flanges of longitudinal stiffeners.

4 Spring hanger bracket assembly.

5 Longitudinal stiffener.



7/3/416/TR